

V Series AC Inductive Proximity Sensors



M12 (12 mm), M18 (18 mm), M30 (30 mm) metal – AC

- Multi-voltage: 20 to 253VAC
- 2-wire
- Metal housing
- Axial cable with tang or Quick-disconnect models
- IP67 rated
- LED status indicator

Dimensions

Figure 1

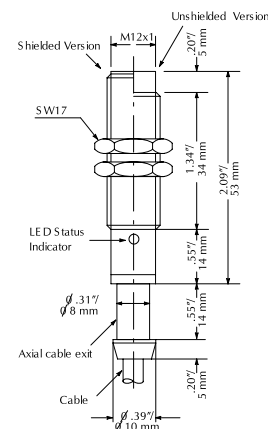


Figure 2

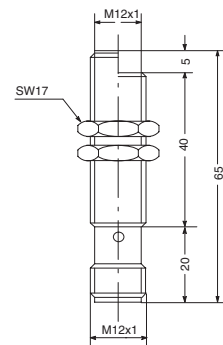
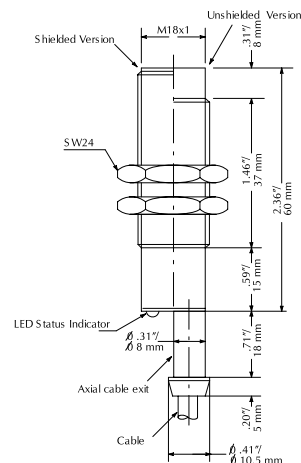


Figure 3



V Series M12/18/30 AC Inductive Prox Selection Chart						
Part Number		Sensing Range	Housing	Output State	Connection	Dimensions
M12 Models						
VM1-A0-1B	<-->	2mm (0.079in) ¹	Shielded	N.O.	2m (6.5') axial cable	Figure 1
VM1-A0-2B	<-->	4mm (0.157in) ¹	Unshielded		2m (6.5') axial cable	Figure 1
VM1-A0-1H	<-->	2mm (0.079in) ¹	Shielded		M12 (12mm)	Figure 2
VM1-A0-2H	<-->	4mm (0.157in) ¹	Unshielded		M12 (12mm)	Figure 2
M18 Models						
VK1-A0-1B	<-->	5mm (.197in) ²	Shielded	N.O.	2m (6.5') axial cable	Figure 3
VK1-A0-2B	<-->	8mm (0.315in) ²	Unshielded		2m (6.5') axial cable	Figure 3
VK1-A0-1H	<-->	5mm (.197in) ²	Shielded		M12 (12mm)	Figure 4
VK1-A0-2H	<-->	8mm(0.315in) ²	Unshielded		M12 (12mm)	Figure 4
M30 Models						
VT1-A0-1B	<-->	10mm (.394in) ³	Shielded	N.O.	2m (6.5') axial cable	Figure 5
VT1-A0-2B	<-->	15mm (0.591in) ³	Unshielded		2m (6.5') axial cable	Figure 5

¹With 12x12 Fe360 target ²With 18x18 Fe360 target ³With 30x30 Fe360 target

Specifications	M12 Models	M18 Models	M30 Models
Differential Travel	2 to 10%		
Repeat Accuracy	5%		
Material Correction Factors	*See Material Influence table #1		
Operating Voltage	20–253VAC, 50/60Hz		
Inrush Current	7A for up to 10ms		
Load Current	5 to 300mA (RMS)		
Leakage Current	1.0mA max. (RMS)		
Output Type	Triac/NO/2 wire		
Switching Frequency	25Hz		
(tv) Time Delay Before Availability	200ms		
Temperature Range/Temperature Drift	-25° to +70° C (-13° to 158° F) / 10% Sr		
Protection Degree (DIN 40 050)	IEC IP67		
LED Indicators	Yellow (output energized)		
Housing Material	Nickel-plated brass		
Sensing Face Material	PBT	POM	PBT
Tightening Torque	15Nm (11lb./ft.)	40Nm (29lb./ft.)	100Nm (73lb./ft.)
Weight	70g (2.47oz)	120g (4.23oz)	300g (10.6oz)

*See Material Influence table #1 on page 17–53

Cables and Accessories

Cables and accessories can be found starting on page 17–48.

V Series AC Inductive Proximity Sensors

Figure 4

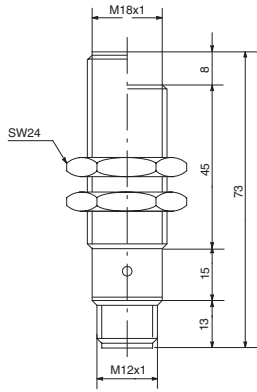
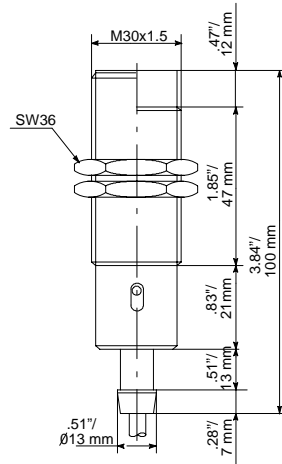
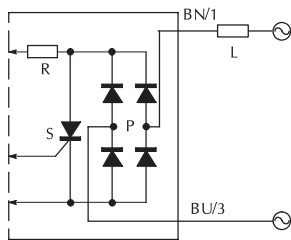


Figure 5



Wiring diagram



Connector Pinouts

